

Joondalup
Education Support Centre
Independent Public School

Learning for Life

Annual Report
2020

Principal's Message

2020 at Joondalup Education Support Centre (Joondalup ESC) was a unique year, as our school responded and adapted to operate within a COVID safe space. Despite the complexities of the year a number of new operating procedures were created, and we continued to implement whole school priorities and programs aligned with our business plan and department priorities.

In Term 4 of 2020 Joondalup ESC engaged in a whole school review. Facilitated by the Directors of Public School Accountability, parents, staff and the School Board shared experiences and provided evidence against standards. Our self-assessment deemed our school to be effective, which was validated by the reviewers. It is anticipated our next school review will be in 2023 or 2024. Click on the link to see the full report.

https://www.det.wa.edu.au/schoolsonline/expert_review_report.do?schoolID=6084&pageID=AD19

In 2020 we launched our 2020-2022 business plan, which was created in collaboration with staff, families, the community and school board.

Our focus areas over the next three years are;

- Most Viable Curriculum
- Collaboration
- Shared Language
- Attendance

Throughout 2020 staff engaged in a number of school

School Board

Joondalup ESC has an active School Board which met throughout the 2020 school year. The School Board actively participated in planning and endorsing our new Business plan.

They also played an active role in endorsing our annual report, financial budget and in communicating with the community regarding the Board's function and activities.

I would like to thank the School Board for their effort and commitment throughout 2020. Chaired by Theresa Pastor our Board continued to operate effectively despite COVID restrictions and ensured sound governance of school operations. A number of Board members, including our Board chair have resigned their position as their tenure has come to an end. We will endeavour to advertise for new Board members in the school 2021 year.

self-assessments to review our progress toward our targets and milestones set. In 2020 we set revised academic and non-academic targets aligned to our whole school non-standardised assessment tools. In 2020 we launched new assessment tools, and interrogated the data received from these assessments. We are satisfied that these assessment tools meet the needs of students, and provided us with quality data to inform our planning and teaching.

We are very satisfied with how we have progressed as a school throughout 2020 and are confident that we will achieve our set targets each year as stated in the business plan.



P&C

Joondalup ESC and Joondalup Primary School have a combined P&C. This inclusive group work together on behalf of all students at Joondalup Schools. Despite the difficulties of fundraising throughout 2020 the P&C continued to support the school community and subsidised our Yr. 6 camp. They also held a highly successful colour run, and continued to operate a canteen 5 days a week.

Student Information

Student numbers increased as anticipated throughout 2020. The majority of students come from the immediate surrounding suburbs, and a number of students moved into the area throughout the year.

Student numbers at semester two census 2020

Student Numbers Trends

Semester 1	2015	2016	2017	2018	2019	2020
Primary (Excluding Kin)	44	55	51	57	72	94
Semester 2	2015	2016	2017	2018	2019	2020
Primary (Excluding Kin)	56	54	53	59	76	97

2020 school year Primary	Kin	PPR	Y01	Y02	Y03	Y04	Y05	Y06	Total
Full Time	(6)	19	15	6	18	14	12	13	103
Part Time	12								

Graduating students transitioned to Belridge Secondary Education Support Centre, the Catholic system, and the independent schooling system.

Business Plan Focus Area One: Most Viable Curriculum

In 2020 we commenced a focus on creating important learning experiences for every individual student every day, in order to provide every student with a pathway to a successful future.

Academic growth is an indicator for success for each student, however it is not the only measure we use at Joondalup ESC. Resilient, healthy students, who are active and engaged is just as important for students to be successful. In 2020 a number of initiatives were commenced or refined from 2019 to offer opportunities for students to become engaged before, during and after school.

In 2020 a number of specialist programs were delivered. These included;

- Visual Arts Years PP – Yr. 6
- African Drumming Years PP – Yr. 6
- STEM Years K – Yr. 6
- Music Years PP – Yr. 6
- Physical Education and Perceptual Motor Programs PP – Yr. 6

Throughout 2020 Joondalup ESC continued to support “Act, Belong, Commit” and all existing initiatives were



planned to continue in 2020, however many were cancelled or suspended due to COVID restrictions. When restrictions lifted extra-curricular activities specifically for students with disabilities, as well as initiatives for all students on the Joondalup Campus recommenced. These included Running Club, Garden Club, Breakfast Club, Music Rocks Australia, Craft Club and After School Sport.

Alternative and Augmentative Communication (AAC) continued to be a focus and is now embedded into each class as part of each staff member's skill set. All staff have access to training, a PODD, and our AAC co-ordinator. Formalised staff training was rolled out in Term 2, and in 2021 we will increase the AAC co-ordinator role to two days a week, enabling additional support to be offered to students, staff and families.

Streamed Literacy continued in 2020 and students Pre-Primary – Year 6 participated three times a week. Comprehension, phonics, and reading were the focus of this whole school initiative using a range of programs from Minilit, and Cars and Stars. In 2021 we will expand this to include Talk For Writing.

Academic Targets

We have a number of new academic targets as outlined in our current Business Plan, and this is the first year of reporting against these targets. Non standardised assessment tools have been created reflecting the curriculum. Although non-standardised, these assessments have been trialled and tested, and reviewed to ensure they are authentic, and valid. All staff are comfortable with the tools, and we are able to extract valuable information to inform planning and drive student improvement and achievement.

Improvement Targets - Literacy

In 2020 we used specific assessment tools to measure reading progress of students. The assessment tools we used measured progress of students operating in an **emergent**, **transitional**, or **conventional** reading stage. Given this is a **new** assessment tool, growth has been measured over 6 months, thus the annual target is to be halved.



Reading Emergent

Assessment Group	Sub Group	Target Average student improvement each year Raw points	Target met/not met Average raw points
		For this initial year we only need to reach half this target.	Scores below are based on 6 months growth – July – December 2020
Emergent	Letter name identification	3 points	Target MET 12.9 point growth
	Concepts of print	2 points	Target MET 3.4 point growth
Transitional	Letter sound identification	10 points	Target MET 9.2 point growth
	Concept of word	8 points	Target MET 4.28 point growth
	Rhyme	1 point	Target MET 2.46 point growth
	Phoneme matching	2 points	Target MET 2.87 points
	Phoneme awareness	10 points	Target MET 8.12 point growth
	Word Recognition	5 points	Target MET 4.36 point growth
	Comprehension	2 points	Target MET 2.64 point growth
Conventional	Reading progress	1 reading level	Target MET 1.15 levels
	Reading accuracy	4 – month increase	Target MET 4.7 month growth
	Reading rate	3 – month increase	Target MET 4.0 month growth
	Reading comprehension	2 – month increase	Target MET 4.8 month growth

In 2020 all targets were reached, and each group made substantial progress beyond our set target. A whole school approach to balanced literacy and targeted streamed literacy instruction has supported these accelerated results.



Numeracy

Numeracy

The data below shows the whole school results from our non-standardised numeracy assessment tool. We have assessed students across five groups, dependent on individual learning, not age.

Assessment Level	Curriculum Grade Link	Target Average student improvement each year	Target met/not met Average %
Group One Conceptual Level	ABLEWA A/B	10%	Target MET 59.7% growth
Group Two Pre-Foundation level	ABLEWA C/D	15%	Target MET 35.0% growth
Group Three Foundation level	Pre-Primary	15%	Target MET 37.0% growth
Group Four Year One level	Year One	15%	Target MET 50.2% growth
Group Five Year Two level	Year Two	15%	Target MET 37.2% growth

In 2020 all targets were reached, and each group made substantial progress beyond our set target. A whole school approach, targeted number instruction and a focus on numeracy has supported these accelerated results.

10% of our students were operating within the Yr. 3 curriculum in 2020. These students engaged in Progressive Achievement Tests (PAT). The majority of this small cohort (10 students) made significant progress improving by 15% or more.

Business Plan Focus Area Two: Collaboration

In 2020 we commenced a whole school assessment of therapy service provision during school hours with the intention of finding strategies to better suit families, therapists and classrooms to ensure seamless transitions between classroom learning and therapy. Feedback suggested that dedicated therapy spaces, and a further understanding into on-site and off-site therapy provision was required. In 2021 we will complete therapy agreements in person with families, therapists, teachers and administration.

Becoming more culturally responsive was a high priority throughout 2020. Joondalup ESC collaborated with Joondalup Primary School to host a number of morning and afternoon teas for our Aboriginal families and community. It was an opportunity for families to share stories and strengthen connections with the school and each other. Our yarning circle project stemmed from here, and the concept, design, and artwork was completed by families connected to the school, in collaboration with students.

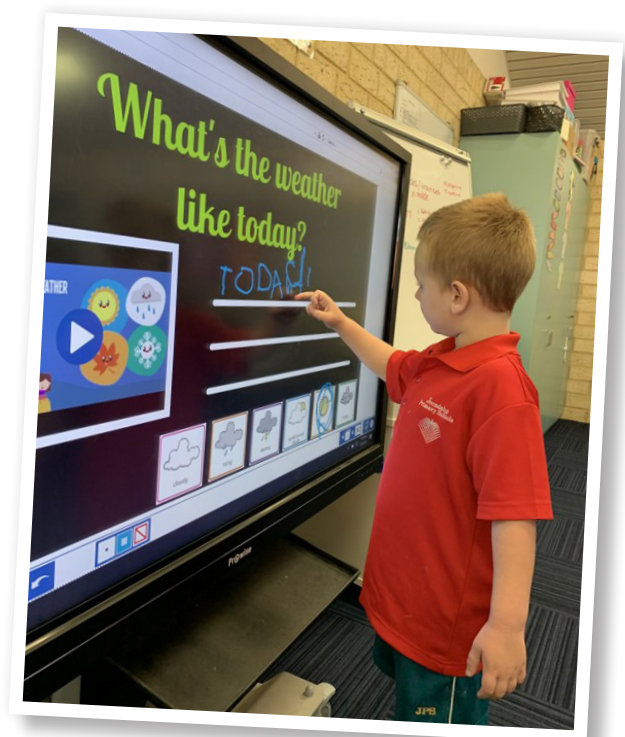
Through discussions with staff on how we could promote cultural responsiveness a number of staff uniforms were designed and purchased. "Warrior", "Our Beautiful Country", "Salt Meets Earth", and "Connection to Country" designs have been worn proudly by staff. Families, students and the community have given very positive feedback about the designs.

Business Plan Focus Area Three: Shared Language

Throughout 2020 a number of professional collaboration teams were formalised reflecting our priority areas. These teams planned collaboration times during school days in literacy, numeracy, early years' education and health and wellbeing.

Our numeracy and literacy teams have been instrumental in ensuring our whole school assessments were delivered by trained, confident staff, and student results were collated in a way which was easy to read and understand.

In 2020 a group of staff engaged with *NoTosh* to write our school story and connect with students, staff, families and the community. It was a powerful experience which has supported the development of a school narrative which we all feel connected to.



2020 Year Group Breakdown

Business Plan Focus Area Four: Attendance

The development of information brochures for families on attendance, and health and wellbeing as well as forms for families to complete if therapy was commencing offsite has supported the school in tracking and supporting individual students who were at indicated risk for attendance.

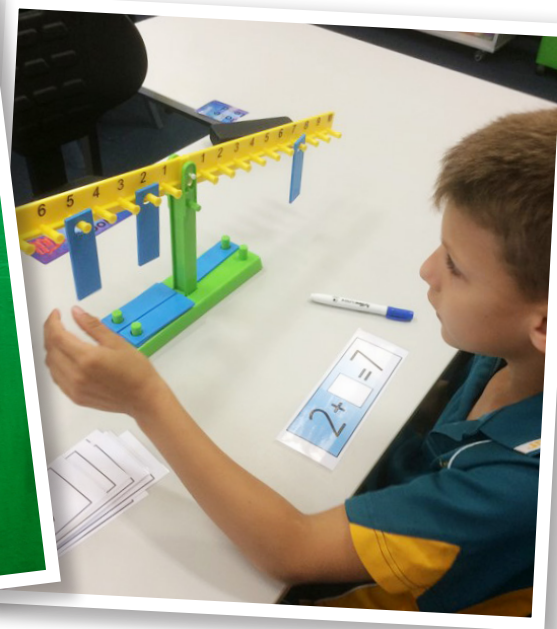


Attendance Rate- Note that the Absences are proportions of half days in each category

Collection Period	2018 Sem 1	2018 Sem 2	2019 Sem 1	2019 Sem 2	2020 Sem 1	2020 Sem 2
Attendance Rate	93.4%	88.5%	88.7%	89.1%	81.3%	89.9%
Regular Attendance	78.3%	55.7%	56.0%	61.2%	23.0%	60.6%
Authorised Absence	85.2%	71.3%	63.7%	67.4%	90.3%	80.1%
Unauthorised Absence	14.8%	28.7%	36.3%	32.6%	9.7%	19.9%

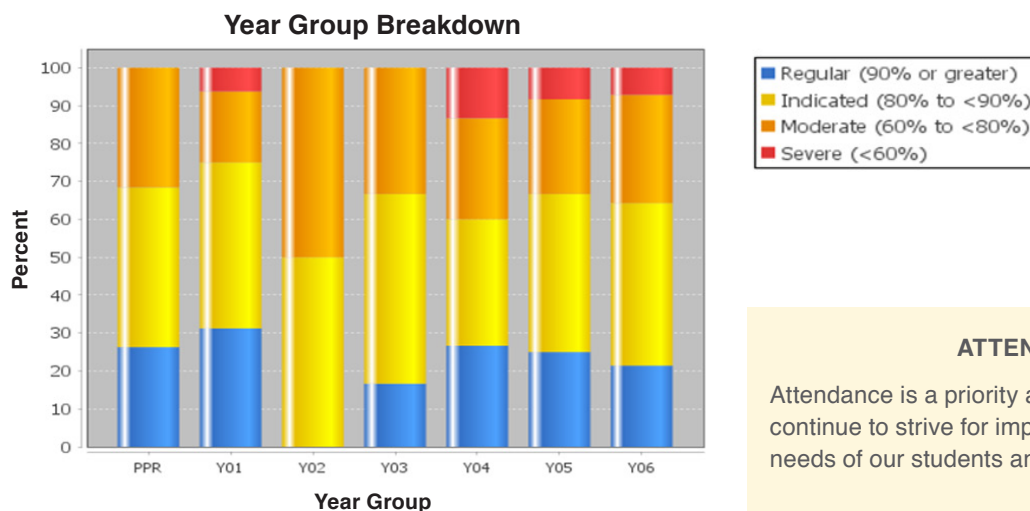
Attendance Risk Category- Note that percentage shows the proportion of students in each category, not their attendance rates.

Collection Period	2018 Sem 1	2018 Sem 2	2019 Sem 1	2019 Sem 2	2020 Sem 1	2020 Sem 2
Regular Attendance	78.3%	55.7%	56.0%	61.2%	23.0%	60.6%
Indicated Risk	18.3%	27.9%	32.0%	23.8%	43.0%	27.3%
Moderate Risk	1.7%	11.5%	9.3%	12.5%	29.0%	7.1%
Severe Risk	1.7%	4.9%	2.7%	2.5%	5.0%	5.1%

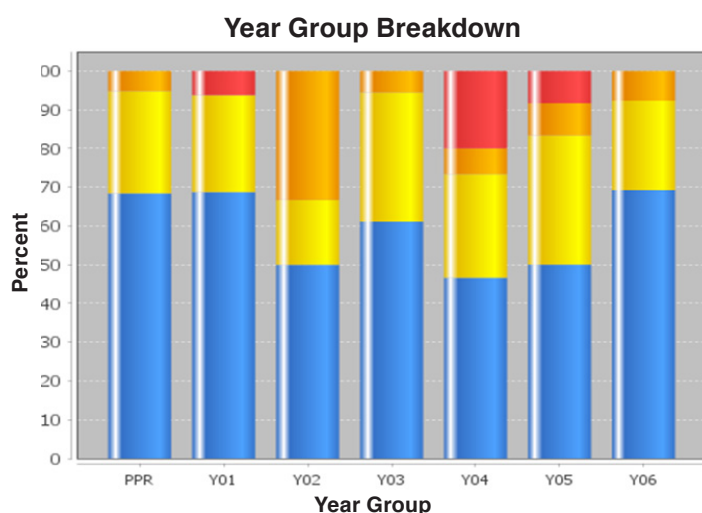


Semester 1 2020 Year Group Breakdown

Semester 1 2020 Year Group Breakdown



Semester 2 2020 Year Group Breakdown



ATTENDANCE DATA

Attendance is a priority at Joondalup ESC and we continue to strive for improvement whilst supporting the needs of our students and families.

Our attendance data over the past six semesters shows:

- Despite COVID, Semester 2, 2020 shows a higher attendance rate than the previous two years.
- The percentage of students in the Regular Attendance category was comparable to previous years, however the percentage in the Severe category increased compare to 2019, but comparable to 2018.
- A continued significant increase in student numbers has had an impact on attendance as well as ongoing illness.

Joondalup ESC will continue to drive improvement through parent communication and case management for complex cases.

Capital Works

Late in 2020 we received \$300,000 in funding as part of the Education Maintenance Stimulus Package. This funding has been targeted for student access throughout the campus. Walkways have been levelled and ramps will be installed. In 2021 the E Block storage area will be refurbished to support students to access therapy at school during school hours.

A number of capital works projects were completed in 2020, many of which enhanced both the grounds around the campus and indoor learning areas for students. Soft fall throughout the K Block play area and gazebo area, play equipment in the junior playground, drink fountains to replace our old ones, play equipment in the senior playground, an additional flag pole, new stage including wheel chair access and bore stain removal on concrete areas and roof areas were all completed.

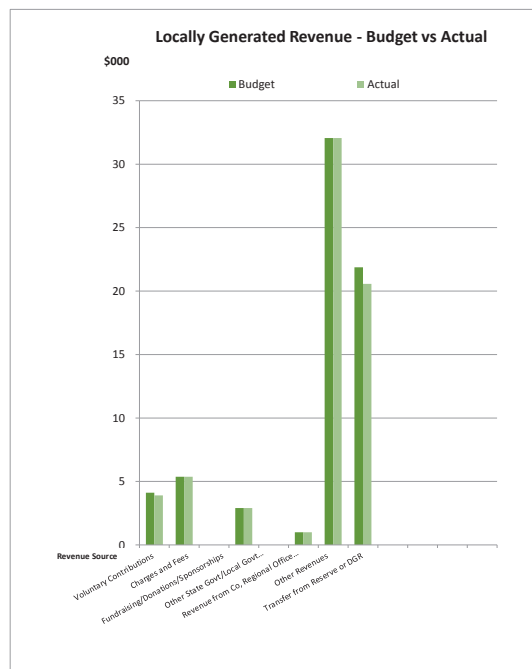
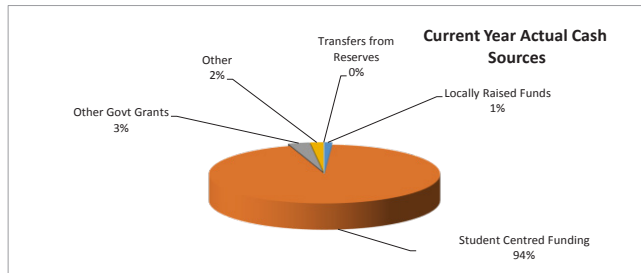
Indoor learning space improvements include two additional transportable classrooms, sky light installation to B Block, indoor art work around our drumming room, refurbishment of the laundry area in E Block, and painting of many classrooms. In preparation for our new early childhood classroom a large project commenced to redesign a staff carpark and install a large shed, replacing 3 storage areas that had been erected over previous years. This area is now complete, and kindergarten students learn adjacent to their primary peers, and we have improved storage and parking for the campus.

In 2021 we will continue to install skylights to promote natural lighting in classrooms, and replace pin up boards in classrooms.

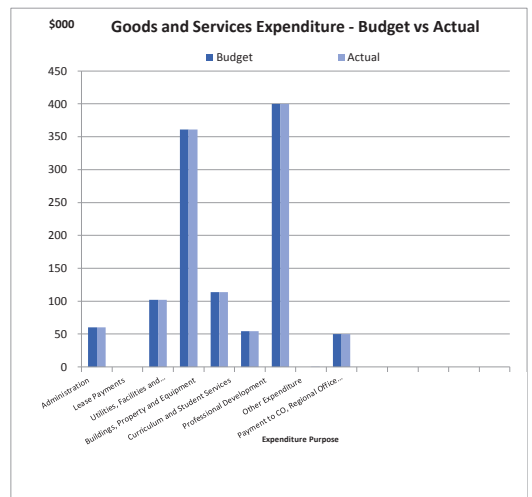
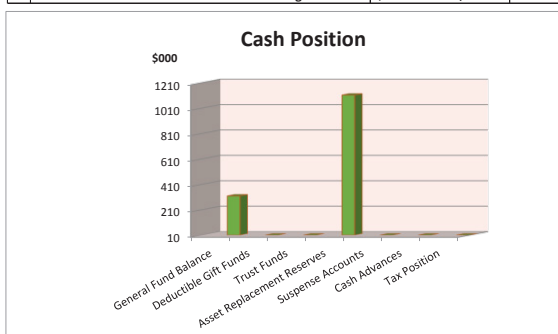
Joondalup Education Support Centre

Financial Summary as at 31 December 2020

	Revenue - Cash & Salary Allocation	Budget	Actual
1	Voluntary Contributions	\$ 4,115.00	\$ 3,900.00
2	Charges and Fees	\$ 5,373.00	\$ 5,373.00
3	Fees from Facilities Hire	\$ -	\$ -
4	Fundraising/Donations/Sponsorships	\$ 2,903.00	\$ 2,903.10
5	Commonwealth Govt Revenues	\$ -	\$ -
6	Other State Govt/Local Govt Revenues	\$ 1,000.00	\$ 1,000.00
7	Revenue from Co, Regional Office and Other Schools	\$ 32,052.65	\$ 32,052.77
8	Other Revenues	\$ 21,869.00	\$ 20,571.60
9	Transfer from Reserve or DGR	\$ -	\$ -
10	Residential Accommodation	\$ -	\$ -
11	Farm Revenue (Ag and Farm Schools only)	\$ -	\$ -
12	Camp School Fees (Camp Schools only)	\$ -	\$ -
	Total Locally Raised Funds	\$ 67,312.65	\$ 65,800.47
	Opening Balance	\$ 360,151.00	\$ 360,150.87
	Student Centred Funding	\$ 1,033,532.30	\$ 1,033,532.43
	Total Cash Funds Available	\$ 1,460,995.95	\$ 1,459,483.77
	Total Salary Allocation	\$ 6,244,170.00	\$ 6,244,170.00
	Total Funds Available	\$ 7,705,165.95	\$ 7,703,653.77



	Expenditure - Cash and Salary	Budget	Actual
1	Administration	\$ 60,184.30	\$ 60,183.17
2	Lease Payments	\$ -	\$ -
3	Utilities, Facilities and Maintenance	\$ 102,003.00	\$ 102,002.89
4	Buildings, Property and Equipment	\$ 360,796.20	\$ 360,794.92
5	Curriculum and Student Services	\$ 113,636.65	\$ 113,607.40
6	Professional Development	\$ 54,501.00	\$ 54,500.74
7	Transfer to Reserve	\$ 400,000.00	\$ 400,000.00
8	Other Expenditure	\$ -	\$ 3.42
9	Payment to CO, Regional Office and Other Schools	\$ 50,000.00	\$ 50,000.00
10	Residential Operations	\$ -	\$ -
11	Residential Boarding Fees to CO (Ag Colleges only)	\$ -	\$ -
12	Farm Operations (Ag and Farm Schools only)	\$ -	\$ -
13	Farm Revenue to CO (Ag and Farm Schools only)	\$ -	\$ -
14	Camp School Fees to CO (Camp Schools only)	\$ -	\$ -
	Total Goods and Services Expenditure	\$ 1,141,121.15	\$ 1,141,092.54
	Total Forecast Salary Expenditure	\$ 4,204,747.00	\$ 4,204,747.00
	Total Expenditure	\$ 5,345,868.15	\$ 5,345,839.54
	Cash Budget Variance	\$ 319,874.80	



Cash Position as at:	
Bank Balance	\$ 1,429,900.21
Made up of:	-
1 General Fund Balance	\$ 318,391.23
2 Deductible Gift Funds	\$ -
3 Trust Funds	\$ -
4 Asset Replacement Reserves	\$ 1,112,749.98
5 Suspense Accounts	\$ 696.00
6 Cash Advances	\$ -
7 Tax Position	\$ 1,937.00
Total Bank Balance	\$ 1,429,900.21

JOONDALUP EDUCATION SUPPORT CENTRE ANNUAL REPORT

The Joondalup Education Support Centre School Board has endorsed the 2020 Annual Report.

Natalie Hatton
Natalie Hatton
Principal

Celeste de Villiers
Celeste de Villiers
Chair Person