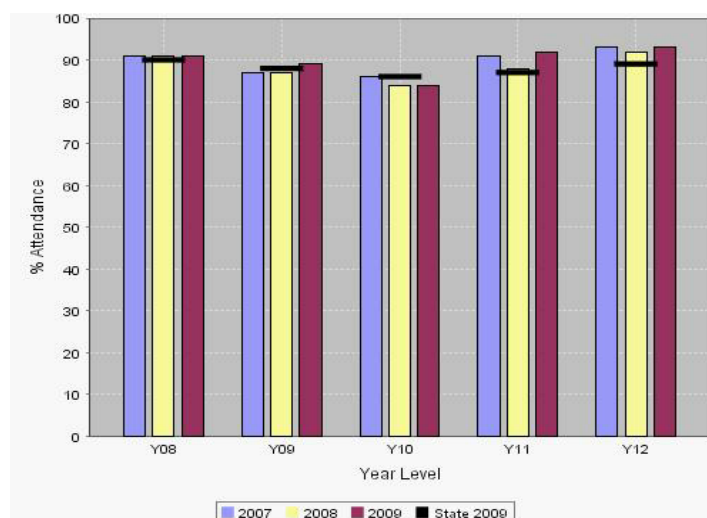


Non Academic Achievement

Attendance

	Non - Aboriginal		Aboriginal		Total	
	School	State	School	State	School	State
2007	90.00%	89.90%	70.10%	69.40%	89.10%	88.40%
2008	89.00%	89.10%	62.00%	67.40%	87.90%	87.60%
2009	90.00%	89.30%	75.10%	66.90%	89.40%	87.70%



Analysis

- School overall attendance rates in 2009 were maintained for years 8 and 10 and improved for years 9, 11 and 12
- The school attendance rates exceeded the state attendance rates in years 8, 9, 11 and 12
- The improvement in aboriginal attendance rates has been outstanding, moving from 62% and well below average in 2008 to 75% and 8.2% above the state average in 2009.
- Improvement in all attendance target areas was achieved.

	2009 Target	Outcome
1	The percentage of students in the regular category will increase from 60% to 65%.	Improved from 60% to 66%
2	The percentage of students in the moderate risk category will decrease from 12% to 10%.	Improved from 12% to 11%
3	The percentage of indigenous students in the severe risk category will decrease from 31% to 25%.	Improved from 31% to 16%

Strategies for Improvement

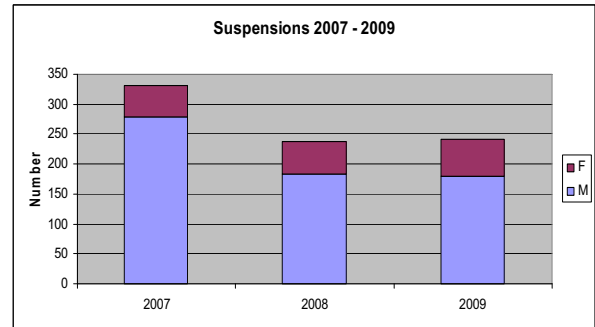
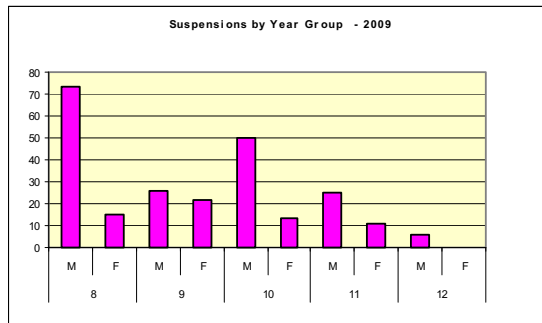
Targets Set for 2010	Strategies
<ul style="list-style-type: none"> The percentage of students in the regular category will increase from 66% to 68%. The percentage of students in the moderate risk category will decrease from 11% to 9%. The percentage of Indigenous students in the regular category will increase from 30% to 40%. Aim to continue with, and expand upon, the strategies from 2009 that have resulted in the above successes. 	<ul style="list-style-type: none"> Early intervention will continue. The messaging system to alert parents of absences will continue. A system of acknowledgements and rewards will be continued to acknowledge students who have good attendance including certificates for high attendance. All students in the severe and moderate categories will continue to be closely monitored by the Student Services Team with interventions as appropriate. A focus on appropriate classroom environment and programs for at risk year 9 and 10 will be maintained. Individual case management of at risk students will continue. Year coordinators and deputies will continue to work closely with families of poor attenders. Strong District Office liaison will continue. Close liaison with the new Indigenous Attendance officers will be established.

Behaviour

Overall suspension rates have been largely maintained from 2008. This follows a large (28%) reduction in suspension from 2007 to 2008. A core group of boys in years 8 and 10 continue to present concern with 25 year 8 boys receiving 73 suspensions and 20 year 10 boys receiving 50 suspensions. Despite the high figure

for year 10 boys, this has improved by 50% for the same group since 2008.

Reducing the high rates of suspension within the 2010 year 9 and 11 boys' cohorts will be a focus for improvement in 2010.



Strategies for Improvement

- The Student Management Committee will continue to promote whole school strategies to maintain a positive school environment.
- Behaviour management workshops on each school development day will continue to be used to promote a positive learning environment and consistent and effective behaviour management strategies across the school.
- The use of the whole school Respect Each Other (REO) strategies, rewards and competitions will be continued as a means of promoting a cooperative environment within the school.
- Staff will continue to *Share Wisdom*. This will involve ongoing sharing of successful management strategies including information on, and assistance with, systems for acknowledgement and rewards and reflecting on attitudes towards student behaviour.
- Reward excursions will be held to acknowledge cooperative and positive behaviour in the year 8 and 9 year groups.
- A further group of teachers will complete the CMS program in 2010.
- District Office support will again be accessed to assist with students exhibiting extreme behaviours.