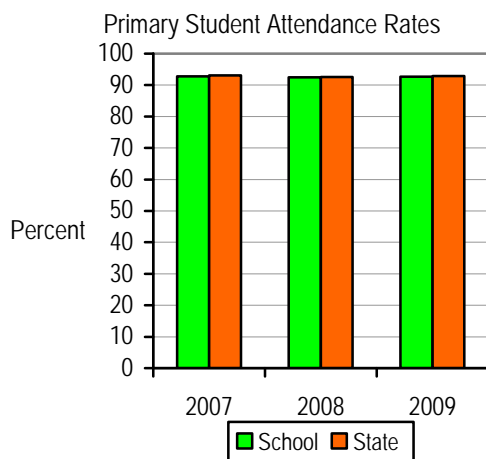


Non-Academic Achievement

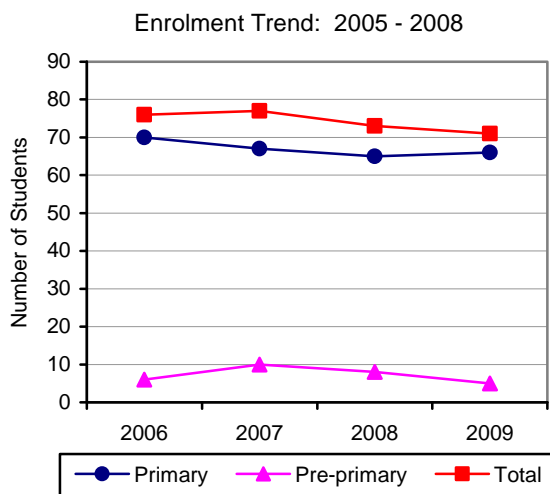
STUDENT ATTENDANCE

The following graph reflects attendance rates at Augusta Primary School compared with the Apparent Attendance Rates for the state for the last three years. Student attendance rates have remained stable at a level consistently in line with the state average. Over the last 3 years this has seen the school student attendance rate remain within 0.3% of the state average.



ENROLMENT TREND

The following graph shows Augusta enrolment trend for students in Pre-primary – Year 7, as reported in semester one, each year.



Small class sizes provide students with improved access to teachers and allows teachers to provide educational opportunities that are child centred and targeted.

YEAR 7 STUDENT DESTINATIONS

At the end of the 2009 school year there were three Year 7 students enrolled at the school. Of these students, all three are now attending Margaret River Senior High School.

ATTITUDE, BEHAVIOUR, EFFORT

The following whole school data has been derived from teacher judgements as reported to parents in Semester 2, 2009.

The positives:

- *Shows self respect and care* – 76% of the student population do this consistently;
- *Participates responsibly in social and civic activities* – 70% of the students do this consistently;
- *Shows courtesy and respect for the rights of others* – 68% of the students do this consistently; and
- *Is enthusiastic about learning* – 68% of the students do this consistently.

Growth areas:

- *Sets goals and works towards them with perseverance* – only 55% of the student population do this consistently; and
- *Shows confidence in making positive choices and decisions* – only 56% of the students do this consistently.