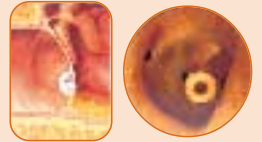
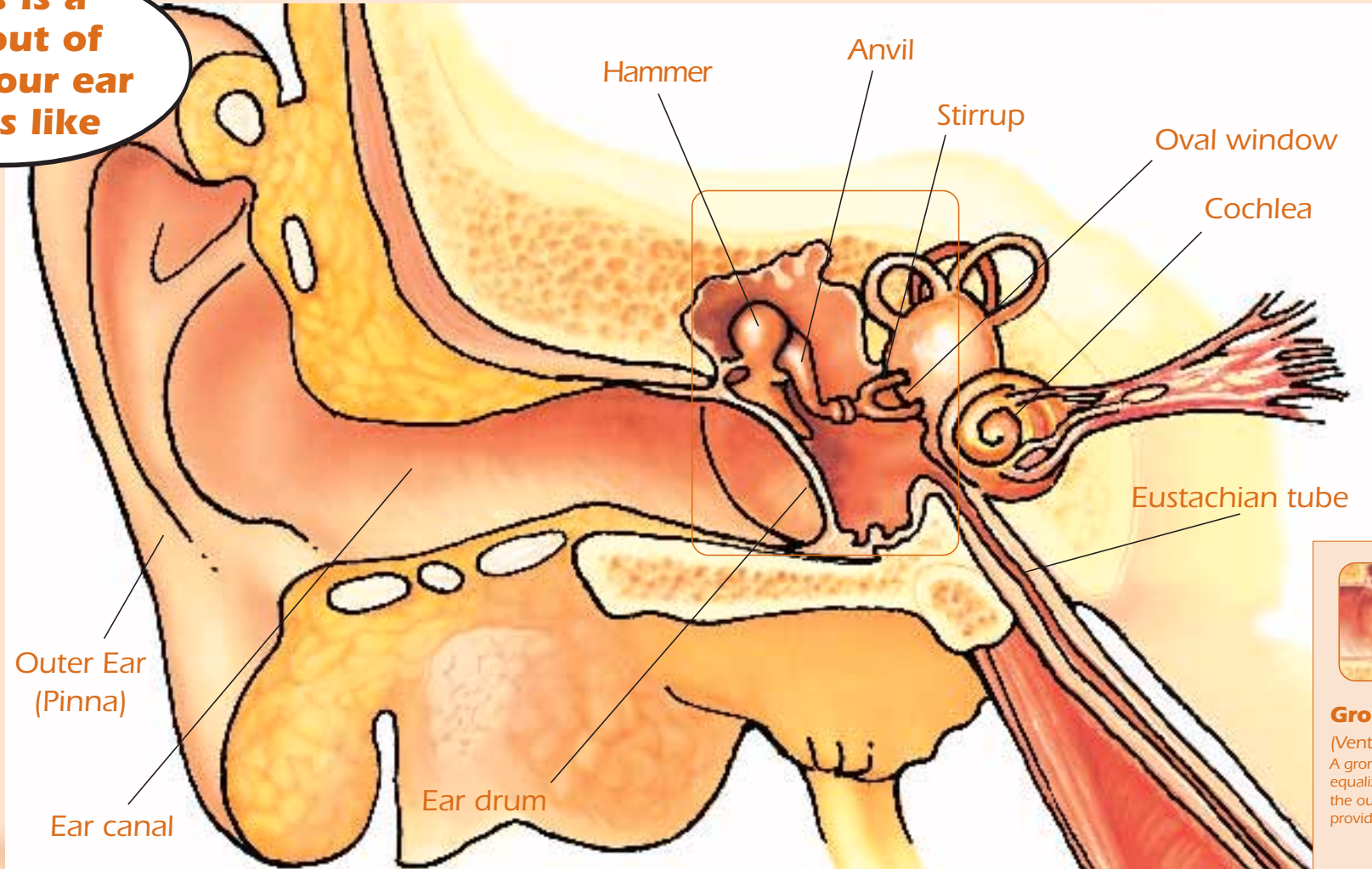
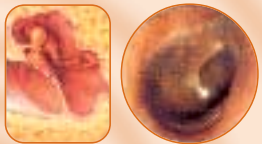


Understanding Middle Ear Infections (Otitis Media/Conductive Hearing Loss)

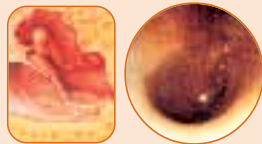
This is a cut-out of what our ear looks like



Grommit
(Ventilation tube)
A grommit can be inserted to equalize the pressure between the outer and middle ear or to provide drainage.



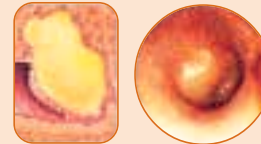
Normal
(Pearly grey, no holes)



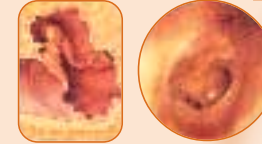
Otitis media with Effusion
(Persistent fluid behind ear drum)



Chronic suppurative otitis media
(Perforation and ongoing discharge)



Acute otitis media
Infection sometimes with fluid &/or fever



Perforation
(Hole in ear drum)



Department of Education

How to Avoid Ear Infections

(Otitis Media/Conductive Hearing Loss)

Wash your hands



Wash your face



Eat healthy foods



Never poke things in your ears

